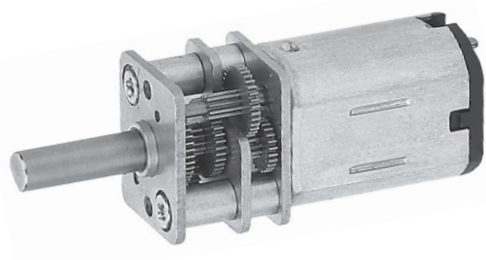
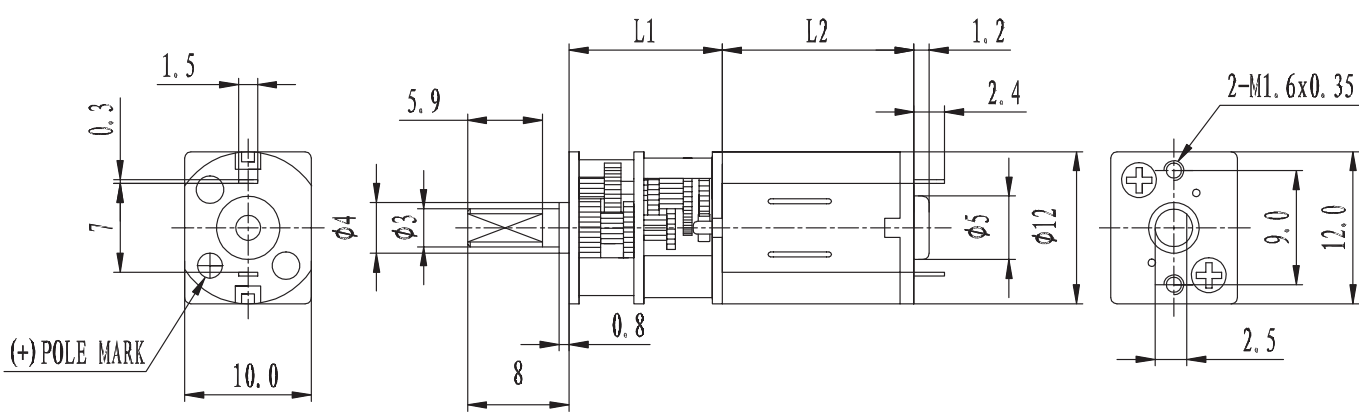


# ZGA12FTT DC Brushed Motor



## Dimension(mm)



## Specification

DC Motor	Ratio	1/5	1/10	1/20	1/30	1/50	1/100	1/150	1/250	1/298	1/380	1/625	1/1000
ZYTD-N20 (6V-17500R)	No load(r/min)	3500	1750	875	580	350	175	115	70	55	46	28	17
	On load (r/min)	2800	1400	700	465	280	140	90	55	45	35	22	14
	Rated Torque (gf.cm)	7	15	25	40	65	130	175	295	350	445	595	955
ZYTD-N30 (6V-30000R)	No load (r/min)	6000	3000	1500	1000	600	300	200	120	100	78	48	30
	On load (r/min)	4800	2400	1200	800	480	240	160	95	80	65	40	26
	Rated Torque(gf.cm)	15	30	50	75	130	260	350	590	700	800	1000	1000
回转方向	电源正极接 + 端子	CCW						CW					

## Gearbox

Reduction Ratio	L	Stages	Allowable torque	
	mm		mN.m	gf.cm
1/5~1/10	9.1	2	19	200
1/20~100	9.1	4	49	500
1/150~1/380	9.1	5	78	500
1/625~1/1000	12.1	7	98	1000

★ 本公司可定做各种非标产品，如有需要请来电咨询。

- FF030
- RF130
- BLDC 1632
- FF130
- FF180
- RF500
- RF300
- RF310
- 094
- BLDC 2035
- 370
- 2418
- 2430
- 385
- 2838
- 395
- 30-C
- 32-C
- 40-C
- 32ZY13
- 32ZY25
- 520
- BLDC 520
- 380
- 555
- BLDC 3640
- 775
- 38S
- BLDC 38S
- 45S
- BLDC 45S
- 50S
- BLDC 50S
- 60S
- BLDC 60S
- 80S
- 稳压器
- 同步电机
- 永磁直流电机
- 交流可逆电机